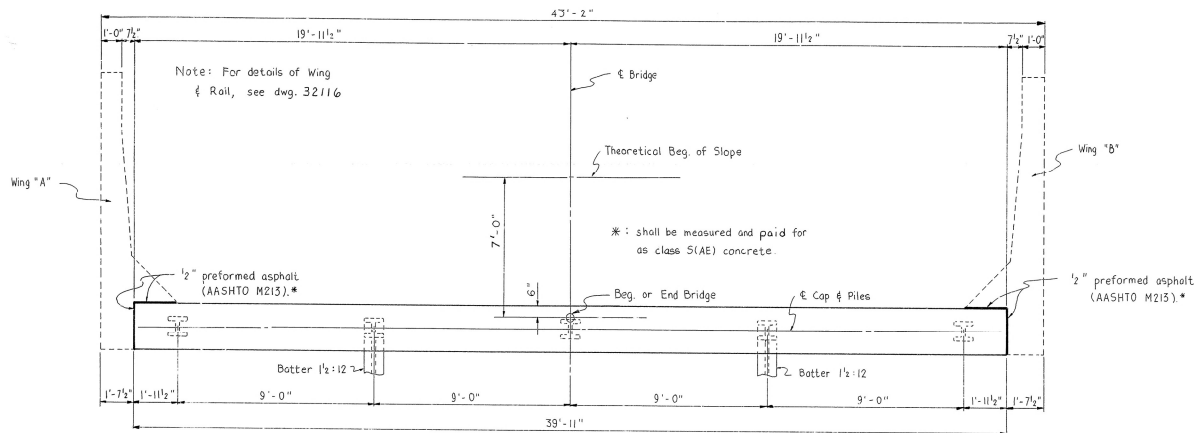


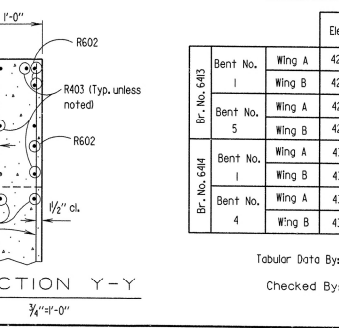
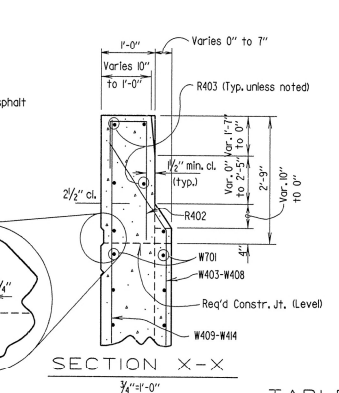
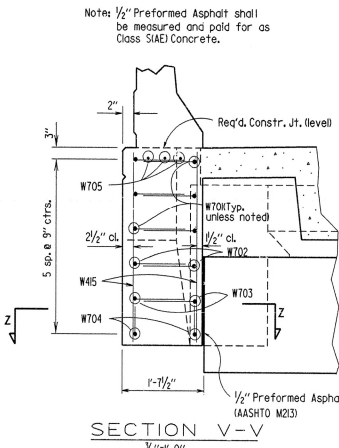
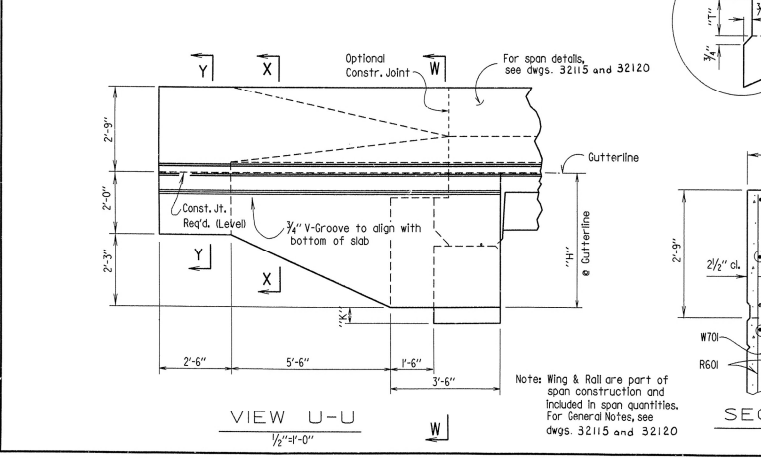
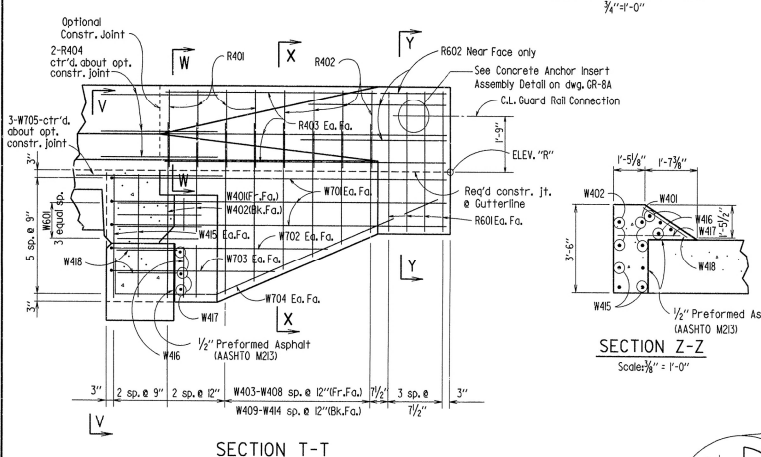
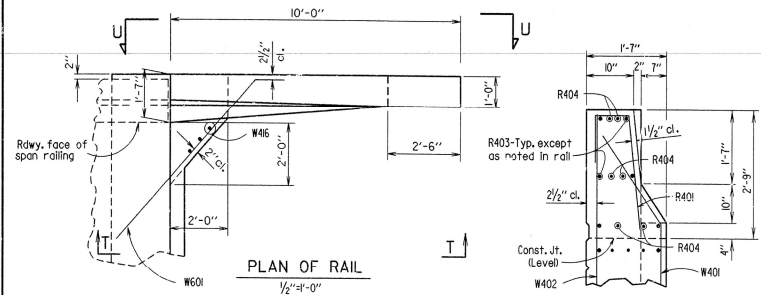
DATE REVISED	DATE FILMED	DATE REVISED	DATE FILMED	FED. ROAD DIST. NO.	STATE	FED. AID PROJ. NO.	SHEET NO.	TOTAL SHEETS
				6	ARK.			
						JOB NO. 3922	19	80
						END BENT		



PLAN OF END BENT

BAR LIST				Bending Diagram	
MARK	No. Req'd.	Length	Pin Dia.		
B401	50	7'-11"	2"		
B402	15	5'-9"	2"		
B403	2	39'-7"	Str.		
D400	27	2'-6"	Str.		
B601	6	40'-11"	1/2"		
B602	6	39'-7"	Str.		
		</			

DATE REVISED	DATE FILMED	DATE REVISED	DATE FILMED	FED. ROAD DIST. NO.	STATE	FED. AID PROJ. NO.	SHEET NO.	TOTAL SHEETS
				6	ARK.		22	80
				JOB NO.	3922			
				6413 & 6414-STD. WING-32116				



BAR LIST - TWO WING & RAILS

MARK	NO.	REQ'D.	LENGTH	A	B	PIN DIA.
R401	8	3'-11"				2"
R402	8	4'-0"				2"
R403	12	9'-8"				Str.
R404	12	4'-0"				Str.
R601	16	4'-5"				Str.
R602	6	5'-0"				Str.
W401	4	5'-6"	4'-4"	1'-2"		2"
W402	4	6'-8"				Str.
W403-W408	2 of each	Var. 3'-4" to 5'-5"	Var. 2'-2" to 4'-3"	1'-2"		2"
W409-W444	2 of each	Var. 4'-6" to 6'-11"				Str.
W445	8	3'-11"				Str.
W446	8	3'-11"				Str.
W447	6	2'-7"				Str.
W448	4	1'-10"				Str.
W601	8	7'-0"	6'-2"	1'-0"		4 1/2"
W701	12	12'-2"	11'-2"	1'-2"		5 1/4"
W702	4	8'-2"	7'-2"	1'-2"		5 1/4"
W703	4	6'-4"	5'-4"	1'-2"		5 1/4"
W704	4	12'-2"				5 1/4"
W705	6	6'-0"				Str.

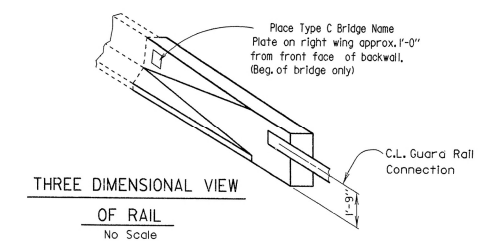
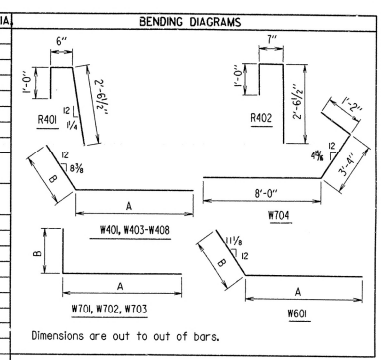


TABLE OF VARIABLES

			Elev. "R"	"H"	"K"	"T"
Br. No. 6413	Bent No. 1	Wing A	426.70	4'-3"	2'-0"	3 3/4"
		Wing B	426.70	4'-3"	2'-0"	3 3/4"
Bent No. 5	Wing A	426.70	4'-3"	2'-0"	3 3/4"	
	Wing B	426.70	4'-3"	2'-0"	3 3/4"	
Br. No. 6414	Bent No. 1	Wing A	439.18	4'-3"	2'-0"	3 3/4"
		Wing B	439.18	4'-3"	2'-0"	3 3/4"
Bent No. 4	Wing A	439.18	4'-3"	2'-0"	3 3/4"	
	Wing B	439.18	4'-3"	2'-0"	3 3/4"	

Tabular Date By: KDH Date: 11 JUN 91
Checked By: JMT Date: 6-18-91

STANDARD DETAILS
FOR WING AND RAILS
HOLLY AND LITTLE HOLLY CREEKS
ROUTE SEC.
ARKANSAS STATE HIGHWAY COMMISSION
LITTLE ROCK, ARK.
ALTERED BY: L.M. DATE: 11-4-87
CHECKED BY: C.J.F. DATE: 11-25-87
DESIGNED BY: STD. DATE: 11-25-87
BRIDGE NO. 6313 & 6314 DRAWING NO. 32116